

Drive and driven flanges

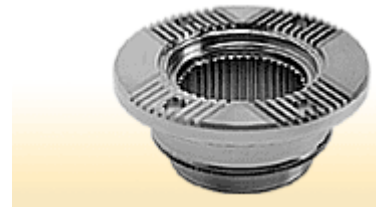
Design: End plate

- Induction-hardened and lead-free ground seal bearing surface
- Internal splines



Design: according to DIN ISO 8667

- Induction-hardened and lead-free ground seal bearing surface
- Internal splines
- Cross-serration 70°



Design: triangular

- Induction-hardened and lead-free ground seal bearing surface
- Internal splines



Design: according to DIN 7646

- Induction-hardened and lead-free ground seal bearing surface
- Case-hardened version
- Internal splines



Design: Half round

- Induction-hardened and lead-free ground seal bearing surface
- Nitrided
- Internal splines



Design: rectangular

- Induction-hardened and lead-free ground seal bearing surface
- Internal spline



Design: Wing style

- Induction-hardened and lead-free ground seal bearing surface
- Nitrided
- Internal splines



- Induction-hardened and lead-free ground seal bearing surface
- Internal splines

